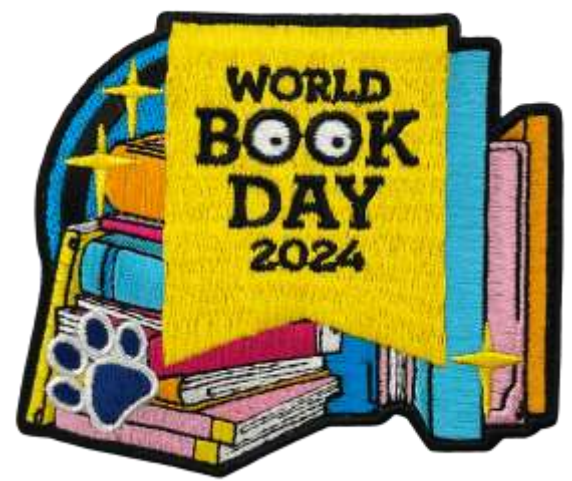




William Brookes School  
and Sixth Form

# NEWSLETTER



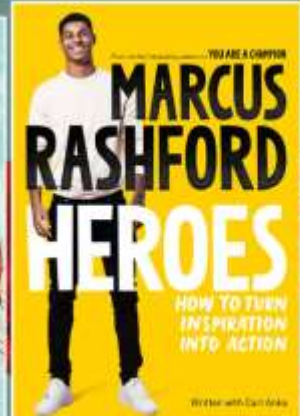
## WBS WORLD BOOK DAY 2024

On Thursday 7<sup>th</sup> March WBS celebrated World Book day by having a William Brookes School Staff dressing up day! Staff were either in departments, teams or solo efforts to represent books and students had to guess the books, characters and vote for best dressed! The school had a fantastic buzz and the staff thoroughly enjoyed it! Thank you for such an amazing day and we hope the students enjoyed it too!





COME TO THE  
**BOOK FAIR**  
and earn  
**FREE BOOKS**  
for our school\*



**Congratulations!**

**THANK YOU TO EVERYONE  
WHO ATTENDED OUR  
SCHOLASTIC BOOK FAIR.**

Together we have raised... **£299.20**  
for our school to spend on **FREE BOOKS**

Thank you to you all that helped to raise this fantastic amount for books to be spent on for the school!





William Brookes School  
and Sixth Form

# NEWSLETTER



## EASTER TOMBOLA

WBS is again running the Easter tombola in school this year and we need your donations!



Drop off your Easter Egg donations to earn a Coubertin house point to either:

- 1) Tutor (who will award the house point)
- 2) Mrs Mincher's office on Beijing (leave a name on the eggs for house point)
- 3) Main Reception (again leave a name for house point)

There will be an Easter Egg Tombola Thursday 21<sup>st</sup> March in London break out space.

50 p a go or 3 goes for £1

All the money raised will go towards teaching & learning of the school.





William Brookes School  
**NEWSLETTER**  
& Sixth Form  
**NEWSLETTER**



**WILLIAM BROOKES  
SCHOOL**

**EXPEDITION TRAINING**

Bronze and Silver participants successfully completed their expedition training this week. It was very muddy!



**Awards achieved**

Well done to all the participants who have been working hard to complete their DofE Awards. If you have put evidence on eDofE it will be reviewed by Miss McCombie before your Award can be sent for verification. Once verified we will then print and distribute certificates. If you haven't heard anything about your Award please check your emails, as if we find any issues you will be emailed telling you how to rectify the problem.

**Completing DofE Awards**

The expedition section is only one quarter of a DofE Award. In order to complete their Award, participants must also complete volunteering, physical activity and learning a skill. Each section must have a report written by an assessor at the end of timescale, which must then be uploaded to the participants eDofE account. If participants are having any problems with completing their Award, please contact Miss McCombie.

If a participant is struggling to find suitable activities for their programme, many ideas can be found at [www.dofe.org/dofewithadifference/activities](http://www.dofe.org/dofewithadifference/activities)

Please remember that program plans need to be entered into eDofE for approval before starting the activity. Once the required time has passed, assessors need to write an assessor report which needs to be uploaded as evidence to eDofE. This can be done at [www.dofe.org/assessor](http://www.dofe.org/assessor)

**eDofE App**

Participants can access their eDofE account via the DofE App. Participants can now set their activities, record evidence and submit programmes for approval at any time, no matter where they are. The DofE App is currently available for participants to download on Android and iOS. You can download the App by going to the Google Play Store or Apple App Store and searching 'The Duke of Edinburgh's Award'.

**Open expeditions**

If your child is unable to attend the school organised expeditions, then they can join an open expedition run by an Approved Activity Provider (AAP). School uses Chase Training Solutions as their AAP, and the dates of their open expeditions can be found on their website here <https://chasetrainingsolutions.co.uk/dofe-expeditions/>

Other opportunities can be found by searching <https://www.dofe.org/opportunity-finder/>



# SPOTLIGHT ON SAFEGUARDING

Working together to keep our young people safe

Secondary | March 2024

In this month's issue:

- Child-on-child abuse
- Our young people and knife crime
- App focus: WhatsApp

## Understanding Child-on-Child Abuse

Child-on-child abuse refers to any inappropriate behaviour between children that is abusive in nature. This type of abuse is so named because it typically involves individuals who are similar in age or developmental stages.

Child-on-child abuse can occur either in-person or online, and it can happen anywhere – at school, in the park, or even within the confines of a child's own home via internet-connected devices. This type of abuse encompasses physical, sexual, or emotional abuse, harassment, exploitation, bullying, coercive control, and initiation rituals.

It is important to keep in mind that child-on-child abuse can cause harm to both the victim and the perpetrator. There is often a complex web of reasons why a child may engage in abusive behaviour towards another.

Spotting the signs that your child may be experiencing abuse:

- noticeable change in behaviour
- not wanting to go to school or spend social time with specific friends
- withdrawn or mood changes
- changes in the times spent online
- asking for money or giving belongings away/losing belongings

WILLIAM  
BROOKES  
SCHOOL



## 5 THINGS YOU CAN DO TO HELP YOUR CHILD STAY SAFE FROM ABUSE

### HAVE A CONVERSATION WITH YOUR CHILD ABOUT STAYING SAFE IN VARIOUS ENVIRONMENTS

Children who are aware of risks and safety measures are better equipped to recognise potential abuse situations.



### HAVE ACCESS TO THEIR SOCIAL MEDIA ACCOUNTS AND USE PARENTAL CONTROLS ON THEIR DEVICES

Monitor children's online activities to protect them from inappropriate behaviour such as grooming. Utilise safety features on devices and apps.



### BE AWARE OF YOUR CHILD'S SOCIAL ACTIVITIES AND WHO THEY ARE SPENDING TIME WITH

Educate your child on the importance of choosing positive environments and companions. Show genuine interest in their activities and relationships.



### TEACH THEM ABOUT BODY SAFETY

Support your child in understanding boundaries regarding their body. It is crucial for them to understand the concept of consent.



### PROTECTION FROM ONLINE HARM

Teach children how to stay safe in the digital world, including social media apps, group chats, and streaming sites.



The Enlightened Parent



# SPOTLIGHT ON SAFEGUARDING

## Knife Crime: Discussing the Topic With Your Child

In the current news climate, we often hear about knife and weapon-related incidents, but it may feel distant. As parents/carers, it's crucial to actively educate our children about these risks. Early intervention is key, and here are some strategies to consider:

- reassure your child that they can always talk to you if something feels wrong
- establish sensible socialising boundaries together
- keep track of their whereabouts and company, incorporating this into the agreed boundaries
- maintain open communication with your child's friends' parents/carers

### Create an open space for conversation

- Avoid a 'big talk'. Instead, have regular conversations whilst doing other activities such as washing up, traveling in the car or doing the shopping.
- Use a stimulus as a starting point. A good conversation starter might be 'Did you hear about that incident in...'
- Give opportunities for your child to talk freely about what they know or have experienced. Listen to them and don't make assumptions.

### Open up about your fears

- Knives don't give protection. If you carry a knife, you are more likely to be injured or killed with a knife.
- Walking away is not cowardly. This may temporarily draw attention from others but this will soon go away.
- There are consequences for using a knife; this can range from injuring or being injured, getting caught by the Police or at worst, killing someone or being killed.

### Give them the tools to make good choices

- Discuss how they might know if one of their friends is getting involved with knife crime.
- Explore what they might say if someone tries to give them a weapon to hold for them. For example, 'My parents/carers go through all of my belongings.'
- Let them know that they can report their concerns anonymously to Footfall (part of CrimeStoppers) Reporting. It could save someone's life.

### Stick to the facts

- The law: it is illegal to carry a knife in a public area without a valid reason.
- You can be searched by the Police if they have reasonable suspicion that you are carrying a prohibited item including a knife.
- If you are found to be carrying a knife, you will be arrested and prosecuted even if you haven't used it. The maximum sentence for carrying without good reason is four years.
- Joint enterprise: you were part of a situation that could have encouraged an incident.

TALKING TO YOUR  
CHILD ABOUT...

KNIFE CRIME

The Enlightened Parent

### WhatsApp: The Risks and Safety Features

Whilst WhatsApp may market some of its features as protecting the privacy of users, they also put children in a vulnerable position.

- End-to-end encryption means that only people in the chat can read the messages; this also means that chats cannot be monitored for illegal activity.
- Live location sharing can be useful but it also means that children and young people can put themselves in a vulnerable position by sharing their location to people they don't really know.
- View once allows content to be sent and read by users only once before disappearing. This leaves children and young people vulnerable to being sent inappropriate content and not being able to report it as it has disappeared.
- Disappearing messages means that content disappears after either 24 hours, 7 days or 90 days. This may encourage a user to send more risky content as they believe it will disappear. It can be forwarded or a screenshot taken within that time and, therefore, shared with others.

### Tips on keeping your child safe on WhatsApp

- Check privacy settings (click the cog) to see what information is currently shared.
- Talk to your child about what to do if someone they don't know contacts them (they should tell you).
- Have open conversations about what is appropriate and inappropriate content to share.



### **Local open days**

#### **Telford College**

01952 642200

01952 642237 (Student Services team)

[www.telfordcollege.ac.uk](http://www.telfordcollege.ac.uk)



### **Book online**

20 March 2024 - 5pm- 7.30pm

VIP personalised tours can be booked online at a time to suit you.

### **Apprenticeships**

#### **Schneider Electric**

From our Company perspective, we have been advertising our vacancies with 'Amazing Apprentices' and their higher degree listings - <https://ow.ly/R0HB50Qx7es>

UCAS – for our Level 4 apprentices and above -

<https://www.ucas.com/explore/search/apprenticeships?query=schneider%20electric>

RateMyApprenticeship - <https://www.ratemyapprenticeship.co.uk/jobs/9955/schneider-electric/level-3-technical-engineering-apprenticeship>

All adverts direct us through to the main Microsite where candidates can apply, which all applications are managed via The Talent People -

<https://peoplefirst.getmyfirstjob.co.uk/apprenticeship-programme?mkt=543>





**Steph Johndrow**

Early Career Talent Acquisition Lead

Global Human Resources

D 07816 591 672

MS TEAMS [stephanie.johndrow@se.com](mailto:stephanie.johndrow@se.com)

E [stephanie.johndrow@se.com](mailto:stephanie.johndrow@se.com)

Schneider Electric Telford

Stafford Park 5

TF3 3BL

**Apprenticeship in Clinical Engineering** at the Royal Wolverhampton Trust in partnership with Walsall Healthcare Trust starting September 2024.

You will find these posts advertised on [NHSJobs.com: Vacancies in Apprenticeships | trac.jobs](https://www.nhs.uk/jobs/vacancies-in-apprenticeships/trac-jobs)

These are available now and close on 1<sup>st</sup> April 2024.

Recruitment days will be held at the end of April 2024.

Apprenticeship pay will be commensurate with AFC (Agenda for change) band 2. Circa 22K per annum.

Contact information is embedded in the document if they require any further information about these posts, however if you think a visit from the team to present this opportunity to your students is beneficial, then please contact Sagreev Chahal on 01902 481606, email: [sagreev.chahal@nhs.net](mailto:sagreev.chahal@nhs.net) or Jenny Cartwright on 01902 695525, email: [jenny.cartwright@nhs.net](mailto:jenny.cartwright@nhs.net)

Clinical Engineering Team

Royal Wolverhampton NHS Trust and Walsall Healthcare Trust



<p>College /6<sup>th</sup> form</p>	<p><b>Open days</b></p> <p>Always Check Prior to attending. Most now require you to book online prior to event.</p>
<p><b>Shrewsbury Colleges Group</b> 01743 342342 <a href="http://www.scg.ac.uk">www.scg.ac.uk</a></p> 	<p><b>Open Evenings</b></p> <p><b>A levels and Arts Tasters (English and Welsh Bridge)</b> <del>6<sup>th</sup> February 2024 4.30pm – 6.30pm</del></p> <p><b>Vocational and Technical Tasters (London Road Campus)</b> <del>22<sup>nd</sup> February 2024 4.30 – 6.30pm</del></p>
<p><b>Telford College</b> 01952 642200 01952 642237 (Student Services team) <a href="http://www.telfordcollege.ac.uk">www.telfordcollege.ac.uk</a></p> 	<p><b>Open Events</b></p> <p><b>Book online</b></p> <p><del>31 January 2024 5pm- 7.30pm</del> 20 March 2024 5pm- 7.30pm 19 June 2024 5pm- 7.30pm</p> <p>VIP personalised tours can be booked online at a time to suit you.</p>
<p><b>Shrewsbury Town College &amp; University</b></p>  <p><a href="https://www.stfccollegeanduniversity.co.uk">https://www.stfccollegeanduniversity.co.uk</a></p> <p>01743 289177 EXT 8 Recruitment@foundationstfc.co.uk</p> <p>Shrewsbury Town Football Club (Media Suite), Oteley Road, Shrewsbury, SY2 6ST</p>	<p><b>Practical Taster session and Open Events</b></p> <p>Awaiting more dates – see website for details</p> <p><b>Further Education</b> Level 2 &amp; 3 Courses in Sport, Physical Activity and Business</p> <p><b>Higher Education</b> Degree in Sports Development, Coaching and Business</p>
<p><b>South Staffordshire College (Rodbaston Campus)</b> 01785 712209 <a href="http://www.southstaffs.ac.uk">www.southstaffs.ac.uk</a></p> 	<p><b>Saturday Open Events</b></p> <p><del>Saturday 20 January 2024</del> Saturday 9 March 2024 Saturday 18 May 2024 Saturday 22 June 2024</p> <p>All open events are from 10am to 1pm on all sites – please book your attendance on the website!</p> <p><b>Hands on taster days during February 2024 half term – see details on website nearer the time.</b></p>



Herefordshire, Ludlow and North  
Shropshire College - WALFORD COLLEGE



[www.nsc.ac.uk](http://www.nsc.ac.uk)

Walford Campus (Near Baschurch,  
Shrewsbury)  
0800 032 1986

### Land based Courses

Access Sport (Formerly Coaching  
Connexions) (Telford ADC)



01952 640064

Contact:

[sam.simmonds@accesssport.ac.uk](mailto:sam.simmonds@accesssport.ac.uk)

Mobile: 07879770950

<https://accesssport.ac.uk/>

### Saturday Open Events

- ~~Saturday 3 February - 10am -12.30pm~~
- Saturday 15 June – 10am-12.30pm

For enquiries please contact:

[info@nsc.ac.uk](mailto:info@nsc.ac.uk)

For aspiring young people with a desire to work in  
the sport and active leisure industry. BTEC L2  
and L3 courses in Sport based at AFC Telford  
United Football Ground.

Apply here for place and/or open day invite (same  
form)

<https://accesssport.ac.uk/applying-for-a-course/>

- ~~7 February 2024 5-7pm interview evening~~
- ~~12 February 2024 1-3pm practical event  
(Half Term)~~
- 20 March 2024 5-7pm interview evening
- 25 March 2024 1-3pm practical event (Half  
Term)
- 22 May 2024 5-7pm interview evening
- 27 May 2024 1-3pm practical event (Half  
Term)

The interview Evenings will be at the Telford ADC  
football club and the practical events at the 4G  
pitch in Madeley, by the ski slope.



### Armed Forces Careers Offices

01743 232678 (Shrewsbury Army Careers Office,  
RAF and Navy initial contact point)

01902 423892 (Wolverhampton Army Careers  
Office only)

Both open 9am - 5.30pm Monday to Friday and  
open in school holidays. - make an appointment  
first.



Training Providers (Apprenticeship support and study programmes to improve confidence, self-esteem, employability skills, Maths and English retakes)



Further apprenticeship support is also available at Enable (once left School) 01743 276900 and all the local Colleges. Others Below.

<https://www.gov.uk/apply-apprenticeship> - The National Apprenticeship Website.

<p><b>SBC Training</b></p> <p>01743 454810 (Shrewsbury)</p>  <p><a href="mailto:info@sbc-training.co.uk">info@sbc-training.co.uk</a>  <a href="mailto:Amanda.carpenter@sbc-training.co.uk">Amanda.carpenter@sbc-training.co.uk</a></p> <p>Apprenticeships, in Construction, Engineering, accountancy, Digital Marketing, ICT and Business at Level 2 and 3 and Careers Support.</p> <p><a href="http://www.sbc-training.co.uk/vacancies">www.sbc-training.co.uk/vacancies</a></p>	<p><b>Apprenticeship Support</b></p> <p>Contact SBC for further information and support. Workshop dates throughout the year – dates to be announced.</p>
<p><b>Juniper Training</b></p>  <p>01952 299016 (Telford)</p> <p><a href="mailto:Enquiries@junipertraining.co.uk">Enquiries@junipertraining.co.uk</a>  <a href="mailto:kayley.pinches@junipertraining.co.uk">kayley.pinches@junipertraining.co.uk</a>  <a href="mailto:Adam.Richardson@junipertraining.co.uk">Adam.Richardson@junipertraining.co.uk</a></p> <p>16-18 study Programme and vocational pathways, traineeships and apprenticeship support.</p>	<p><b>Open Day</b></p> <p><del>Wednesday 17 January 2024 3.30pm – 6pm</del>  <del>Tuesday 13 February 2024 3.30-6pm</del>          Wednesday 27 March 2024 3.30-6pm          Wednesday 29 May 2024 3.30-6pm</p> <p>Contact Juniper for further information and support and individual visits can be arranged.</p>
<p><b>Nova Training</b></p> <p>01952 243380 07951744289</p>  <p><a href="http://www.novatraining.co.uk">www.novatraining.co.uk</a>  <a href="mailto:SharonHumpherries@novatraining.co.uk">SharonHumpherries@novatraining.co.uk</a></p>	<p>Visits can easily be arranged by phoning Sharon Humpherries 07951744289</p> <p>Study programme, Apprenticeship support, Construction Motor Vehicle workshops</p>

<p><b>Landau</b></p>  <p>01952 245 015 (Wellington, Telford)</p> <p><a href="https://www.landau.co.uk/">https://www.landau.co.uk/</a>  <a href="mailto:gail.smallman@landau.co.uk">gail.smallman@landau.co.uk</a>  <a href="mailto:hayley.foley@landau.co.uk">hayley.foley@landau.co.uk</a></p> <p>Study programmes/work tasters</p>	<p>Contact Landau for further information and support</p>
<p><b>County Training</b></p>  <p>0345 6789023  <a href="mailto:j.hackett@hlnc.ac.uk">j.hackett@hlnc.ac.uk</a>  <a href="mailto:apprenticeships@hlnc.ac.uk">apprenticeships@hlnc.ac.uk</a>  <a href="mailto:enquiries@countytraining.ac.uk">enquiries@countytraining.ac.uk</a></p> <p>Website  <a href="https://hlnc.ac.uk/apprenticeships/county-training/">https://hlnc.ac.uk/apprenticeships/county-training/</a></p>	<p>Contact County Training for further information and support (September starts only)</p> <p>Delivering apprenticeships and work-based training across Shropshire and Telford &amp; Wrekin (September start only)</p>
<p><b>JTL Electrical Apprenticeships</b></p>  <p>Joseph Lo 07760554035  0808 5990856</p> <p><a href="https://jtltraining.com/about-us/location-centres/telford/">https://jtltraining.com/about-us/location-centres/telford/</a></p>	<p><b>Electrical Apprenticeships</b></p> <p>At JTL Telford most courses run from September until July, on some occasions, there is the opportunity to join a group during the year.</p>



<p>Wolverhampton College 01902 836000 <a href="http://www.wolvcoll.ac.uk">www.wolvcoll.ac.uk</a></p> 	<p><b>Open days</b></p> <p><del>13 January 2024 10-2pm</del> 24 April 2024 4-7pm 15 June 2024 10-2pm</p> <p>For taster sessions please book/organise through Danielle Jones. <a href="mailto:JonesD@wolvcoll.ac.uk">JonesD@wolvcoll.ac.uk</a></p>
<p><b><u>Incomm Engineering Apprenticeships (formerly MCMT)</u></b></p>  <p>Jayne Guest   Recruitment Manager M: +44(0)7391015415 E: <a href="mailto:jayneq@in-comm.co.uk">jayneq@in-comm.co.uk</a> W: <a href="http://in-comm.co.uk">in-comm.co.uk</a></p>	<p><b>Engineering Apprenticeship Training Centre</b></p> <p>Open day dates.</p> <p><del>14 February 2024 10-2</del></p>

 <p><b><u>Telford Apprenticeship Show</u></b></p> 	<p><b>What University? &amp; What Career? Live</b></p> <p>Birmingham NEC</p> <p>Saturday 2 March 11-3pm</p> <p><a href="https://www.whatcareerlive.co.uk/events/birmingham/directions/">https://www.whatcareerlive.co.uk/events/birmingham/directions/</a></p> <p><b><u>The Telford Apprenticeship show should be in March 2024 – awaiting dates.</u></b></p>
---	---

**FUTURE  
PROOF  
YOUR  
CAREER  
WITH AN**

**APPRENTICESHIP**



Visit our world class state-of-the-art Training Facilities and gain an insight into the benefits of an engineering apprenticeship!



**RESERVE YOUR PLACE AT OUR  
UPCOMING OPEN DAY**

**ALDRIDGE**

Tuesday 26<sup>th</sup> Mar  
10.00am – 2.00pm

**TELFORD**

Thursday 28<sup>th</sup> Mar  
10.00am – 2.00pm

- Take a tour of the training academy
- Talk to our recruitment team
- Discuss our fantastic vacancies
- Apply via our easy step application form
- Talk to tutors and apprentices
- Talk to companies about their current vacancies

**TELFORD  
SKILLS  
SHOW**

**14 MARCH**  
The International Centre  
Telford 11.30am-7pm





# William Brookes School PE Department

## After School Clubs (15:20-16:30) \*unless stated



Starting Mon 8<sup>th</sup> Jan 2024 until Fri 22<sup>nd</sup> March 2024

For more live information please subscribe & download the squad in touch app <https://app.squadintouch.com/#register>

	Outdoor Space MUGA, Grass, Astro turf		Sports Hall	Swimming Pool
Monday				Performance Swimming Club (Lane Swimming)
STAFF				Miss Bagnall
Tuesday	Y7-11 Netball	Y9-11 Football	Y7-11 Basketball	Improvers Swimming Club
STAFF	Mrs Jardine	Mr Boak	Mr Wilson	Miss Bagnall & Ms Coleing
Wednesday	Y7&8 Boys Rugby		Badminton *Y7&8 3.20 - 4.10pm *Y9-11 4.10 - 5pm	
STAFF	Miss Johnson		Mr Bourton & Mrs Hennessy	
Thursday	Y7-11 Girls Football	Y9-11 Rugby	Running Club (After February Half Term)	
STAFF	Mr Boak	Miss Johnson	Mr Ridge/Mr Thurzs	
Friday	Y7&8 Football	Y7-11 Hockey	Wenlock Lightning Netball Club *Y7-9 5.00 - 6pm *Y10-13 6.00 - 7pm	
STAFF	Mr Boak/Mr Parkes	Mr Wilson	Mrs Jardine	



# Dance Clubs



Day of the Week	Year Group	Where	Time
Monday	Year 9-11 Dance Club	Studio 2	3:20-4:20
Wednesday	Year 7-8 Dance Club	Studio 3	3:20-4:20
Wednesday	Elite Dance: Y7-13 (Audition Only)	Studio 2	3:20-4:20
Thursday	Year 11 GCSE Dance Rehearsal/Revision	Studio 2	3:20-4:20

Please come and join us at one of the WBS Dance Clubs this year.

Lots of exciting show opportunities coming up!

Bike maintenance club,  
Open for those whom want to learn how to fix and maintain their bikes.  
In DT, on Wednesday 1515-1600  
Any questions, ask Mr Thursz 😊





# THE EDGE ARTS CENTRE



WILLIAM BROOKES SCHOOL  
FARLEY ROAD  
MUCH WENLOCK  
SHROPSHIRE  
TF13 6NB

WHAT'S ON

	<b>BAND ON THE EDGE</b> FRI 12 APRIL, 7.30PM £12		<b>KATHRYN WILLIAMS &amp; WITHERED HAND</b> SAT 11 MAY, 7.30PM £15
	<b>DIVORCED, BEHEADED, DIED: AN AUDIENCE WITH KING HENRY VIII</b> SAT 13 APRIL, 7.30PM £14		<b>WHAT HO, WODEHOUSE</b> THURS 1 AUGUST, 7.30PM £14
	<b>JOHN DOUGLAS</b> FRI 3 MAY, 7.30PM £12		<b>COLIN COOPSGROVE</b> <b>DIARY OF A BADMINTON PLAYER</b> FRI 4 OCTOBER, 7.30PM £14
	<b>RIA LINA RIAWAKENING</b> SAT 4 MAY, 7.30PM £16		

## CINEMA AT THE EDGE

TICKETS: £5 (CONCESSIONS £4) EXCEPT \*. TICKETS: \* £10 (CONCESSIONS £8) BOOK ONLINE OR PAY ON THE DOOR

<b>ASTEROID CITY</b> (12A) MON 19 FEB, 7.30PM	<b>ONE LIFE</b> (PG) MON 15 APR, 7.30PM
<b>NATIONAL THEATRE LIVE: VANYA</b> *(U) THURS 22 FEB, 7PM	<b>EXHIBITION ON SCREEN: JOHN SINGER SARGENT*</b> THURS 18 APR, 7.30PM
<b>GONE TO EARTH</b> (PG) MON 26 FEB, 7.30PM	<b>SCRAPPER</b> (12) MON 22 APR, 7.30PM
<b>THE GREAT ESCAPER</b> (12A) MON 4 MAR, 7.30PM	<b>CLOCKWISE</b> (U) MON 29 APR, 7.30PM
<b>EXHIBITION ON SCREEN: PAINTING THE MODERN GARDEN: MONET TO MATISSE*</b> (U) THURS 7 MAR, 7.30PM	<b>DRIVING MADELEINE</b> (15) THURS 2 MAY, 7.30PM
<b>THE ELECTRICAL LIFE OF LOUIS WAIN</b> (12) MON 11 MAR, 7.30PM	<b>NATIONAL THEATRE LIVE: NYE*</b> (12A) THURS 9 MAY, 7PM
<b>SHE SAID</b> (15) THURS 14 MAR, 7.30PM	<b>LIVING</b> (12A) MON 13 MAY, 7.30PM
<b>THE SHAWSHANK REDEMPTION</b> (15) MON 18 MAR, 7.30PM	<b>CLOSE</b> (12) THURS 16 MAY, 7.30PM
<b>NATIONAL THEATRE LIVE: THE MOTIVE AND THE CUE*</b> (15) THURS 21 MAR, 7PM	<b>WONKA</b> (U) MON 20 MAY, 7.30PM
<b>THE MIRACLE CLUB</b> (12A) MON 8 APR, 7.30PM	<b>NATIONAL THEATRE LIVE: TBA*</b> THURS 23 MAY, 7PM
<b>ONE FINE MORNING</b> (15) THURS 11 APR, 7.30PM	<b>EDGEARTSCENTRE.COM</b> <b>WWW.TICKETSOURCE.CO.UK/EDGEARTSCENTRE</b>



Walford  
College



# Taster Days & Events

## Taster Days:


Taster Days will need to be booked via your current place of education.


 1st December 2023

## Introduction Day:

 6th June 2024

## Open Days:

 14th October 2023  
10:00am - 12:30pm

 3rd February 2024  
10:00am - 12:30pm

 15th June 2024  
10:00am - 12:30pm



## For More Information:

E: [info@nsc.ac.uk](mailto:info@nsc.ac.uk)  
T: 0800 440 2281  
[hlpsc.ac.uk](http://hlpsc.ac.uk)

Walford College, Baschurch  
Shrewsbury, Shropshire  
SY4 2HL

 [walfordcollege](#)  
 [walfordcollege](#)







**TELFORD**  
COLLEGE

Ofsted  
Good  
Provider



# Your career starts here... Join us for an open event

5pm - 7.30pm

~~11th October 2023~~

~~15th November 2023~~

~~31st January 2024~~

20th March 2024

19th June 2024

or book a 1:1 tour



## New bus routes starting September 2023

- Ironbridge - Bridgnorth - Broseley - Ironbridge - Madeley - Stirchley - Dawley - Horsehay - Lawley
- Shifnal - Priorslee - Wrockwardine Wood - Trench
- Newport - Muxton - Donnington - Hadley

**info@telfordcollege.ac.uk**  
**01952 642200**



# NSPCC



Dear Mr Beard,

Here at the NSPCC, we are always looking for new ways to keep children safe. That's why we've launched our new campaign, [Listen up, Speak up](#).

[Listen up, Speak up](#) is aimed at parents, carers and your wider school community and **we are asking you to help raise awareness amongst them**, as the more people that know, the more children we can keep safe.

[Learn more about our campaign](#)



# Broseley Family Information Drop-In

Free information, advice and support

John Wilkinson Primary School  
Coalport Road, Broseley TF12 5AN

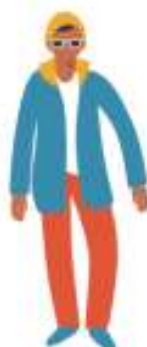
Wednesday 13th March 2024  
Anytime from 3.30pm–5pm



You can chat, have a coffee and see how we can help you with:

- Housing support
- Children's health and wellbeing
- Healthy living advice
- Family life
- Home fire safety
- Domestic abuse support
- Drug & alcohol support
- Financial advice

and lots more!



Shropshire  
Council



- *Would you like to know more about why sleep is important for our health and emotional well-being?*
  - *Does your child struggle with their sleep?*
- *Would you like to access help and support to improve sleep and bedtime routines?*
  - *Would you like to meet other parents/carers to share and discuss experiences?*

## ***SLEEP TIGHT WORKSHOP***

**Starts on Monday 15<sup>th</sup> April 2024 from 9.30am to 11.30am  
at Whitchurch Infants School, Station Road, SY13 1RJ**

**Starts Wednesday 17<sup>th</sup> April 2024 from 9.30am to 11.30am  
Virtually via MS Teams**

**Starts Monday 10<sup>th</sup> June 2024 from 12.30pm to 2.30pm  
at Bridgnorth Youth Centre**

**Starts Wednesday 12<sup>th</sup> June 2024 from 9.30am to 11.30am  
Virtually via MS Teams**

The workshops are delivered virtually via MS Teams or face to face at a venue in Shropshire  
Our workshops run for 5 weeks from the start date excluding the School Holidays.

To book a place on one of our workshops or for further information on the workshops we run please contact the Parenting Team by:

Emailing [Parenting.team@shropshire.gov.uk](mailto:Parenting.team@shropshire.gov.uk)

Or call us on 01743 250950

All our Workshops are free to Shropshire Council residents.





- *Would you like to know more about your child's development?*
- *Do you need help and support to understand your child's behaviour?*
- *Would you like a chance to meet with other parents and carers with children of a similar age?*

## UNDERSTANDING YOUR CHILD



S O L I H U L L   A P P R O A C H

# **UNDERSTANDING YOUR CHILD GROUPS**

## ***From Toddler to Teen***

**Understanding Your Child starts on Wednesday 10<sup>th</sup> April 2024**  
**From 12.30pm to 2.30pm in Shrewsbury at Sunflower House**

**Understanding Your Child SEND starts on Thursday 11<sup>th</sup> April 2024**  
**from 9.30am to 11.30am Virtually via MS Teams**

**Understanding Your Child starts on Thursday 11<sup>th</sup> April 2024**  
**From 1.15pm to 3.15pm in Bridgnorth at St Marys Bluecoat Primary School**

**Understanding Your Child SEND starts on Friday 12<sup>th</sup> April 2024**  
**From 09.30am to 11.30am in Shrewsbury at Sunflower House**

**Understanding Your Child starts on Friday 12<sup>th</sup> April 2024**  
**from 12.30pm to 2.30pm Virtually via MS Teams**

The groups are delivered Virtually via MS Teams or Face to Face at a venue in Shropshire.

All our groups run for 10 weeks from the start date excluding the School Holidays

SEND groups are for parents/carers of children who might have special educational needs and disabilities, no formal diagnosis is needed to attend the groups.

To book a place on one of our groups or for further information on the groups we run please contact the Parenting Team by: Emailing: [Parenting.team@shropshire.gov.uk](mailto:Parenting.team@shropshire.gov.uk) or call us on telephone: 01743 250950

All our groups are free to Shropshire Council residents.



If you would like to find out about further help and support the Parenting Team offer please email

[Parenting.team@shropshire.gov.uk](mailto:Parenting.team@shropshire.gov.uk)

or call us on 01743 250950

All our services are free of charge to Shropshire Council residents.

## UNDERSTANDING YOUR CHILD



S O L I H U L L   A P P R O A C H

## **PARENTING HELP AND SUPPORT LINE**

available

**Monday to Thursday from 9.30am to 4.30pm**

and

**Friday 9.30am to 3.30pm**

*You can contact the Parenting Help and Support Line by calling*

**01743 250950**

*Parenthood can be extremely rewarding and enjoyable. It can also be demanding, frustrating and exhausting. The Parenting Team is here to help and support parents and carers to raise healthy, well-rounded children in a loving and stable environment.*

*Do you have any questions around your child's development and parenting?*

Why not call our Parenting Help and Support Line where one of our trained Parenting Practitioners will be ready to listen.

(Please note the Parenting Help and Support Line will not operate on Bank Holidays)

If you have concerns about a child's safety or well-being, please call

**First Point of Contact 0345 678 9021**





We are delighted to inform you that our school is currently working with Crossroads Together to raise awareness and support young carers within Shropshire. Crossroads Together are the commissioned service in Shropshire to support young carers.

### Who are Young Carers?

A young carer is a young person aged between 6-18 who care for a family member such as mum, dad, brother, sister or grandparents who suffer with a physical disability, poor ill health, learning disability, mental health, or substance and alcohol misuse.

### What do young carers do?

- Practical tasks, such as cleaning, cooking, shopping, general upkeep of the housework
- Personal care, such as helping with toileting, washing, showering/bathing, and getting dressed
- Sibling Care
- Emotional Support

### What are the impacts?

- Lower grades than their peers if young carers miss time in school
- Poor confidence and self esteem
- Emotional impacts, worry and stress
- Stigma of being a young carer may result in bullying
- Isolation



### Who to talk to?

Anita is the dedicated Young Carers Support Worker in our school, come and chat with her if you are a young carer or think you may be a young carer. She will be in the lunch hall at 1.15pm on 2<sup>nd</sup> Oct

**Contact your local Young Carers team:**

**Phone:** 07801576326

**Email:** [shropyc@crossroadstogether.org.uk](mailto:shropyc@crossroadstogether.org.uk)

[www.crossroadstogether.org.uk](http://www.crossroadstogether.org.uk)