

FOLLOW US ON X FOR DAILY UPDATES  
W/C 11TH MARCH 2024



# The WBSpotlight

SHINING A LIGHT ON OUR AMAZING SCHOOL  
EMAIL [RUTH.SHAW@WBS.318EDUCATION.CO.UK](mailto:ruth.shaw@wbs.318education.co.uk) WITH  
CONTENT IDEAS

# The WBSpotlight



**What a week it's been....**

**It's no secret to our students that I am a huge book lover. World Book Day therefore is one my absolute favourite days in the school calendar. This year, WBS staff ensured that WBD was an engaging and memorable week for students. And for all of those asking, yes my purple face paint did come off!**

**Alongside weekly assemblies, your children listen to a Broadcast from me with messages for students; I also try to include a theme when time allows. See a concise version of The Broadcast so you can reinforce key messages at home. I hope you enjoy reading about how much we have going on in school at the moment. The school is a really exciting to be at the moment.**

**Mrs Shaw  
Deputy Headteacher**



**ps. please email me with any ideas for future features**

# The WBSpotlight Amazing Us



A FANTASTIC  
GROUP OF Y7  
STUDENTS ARE  
REWARDED ON  
WORLD BOOK DAY  
FOR BEING SUPER  
READERS!

SUPER STAR HONOR IN 7A  
OBTAINED HER 3RD KYU  
(BROWN BELT) AT KARATE.  
SHE HAS 2 TABS LEFT TO  
EARN BEFORE SHE WILL BE  
ABLE TO GET A BLACK  
BELT.

7 YEARS WORTH OF  
TRAINING SO FAR AND  
BARELY MISSED A  
SESSION, WE ARE ALL SO  
PROUD OF HER!



# The WBSpotlight



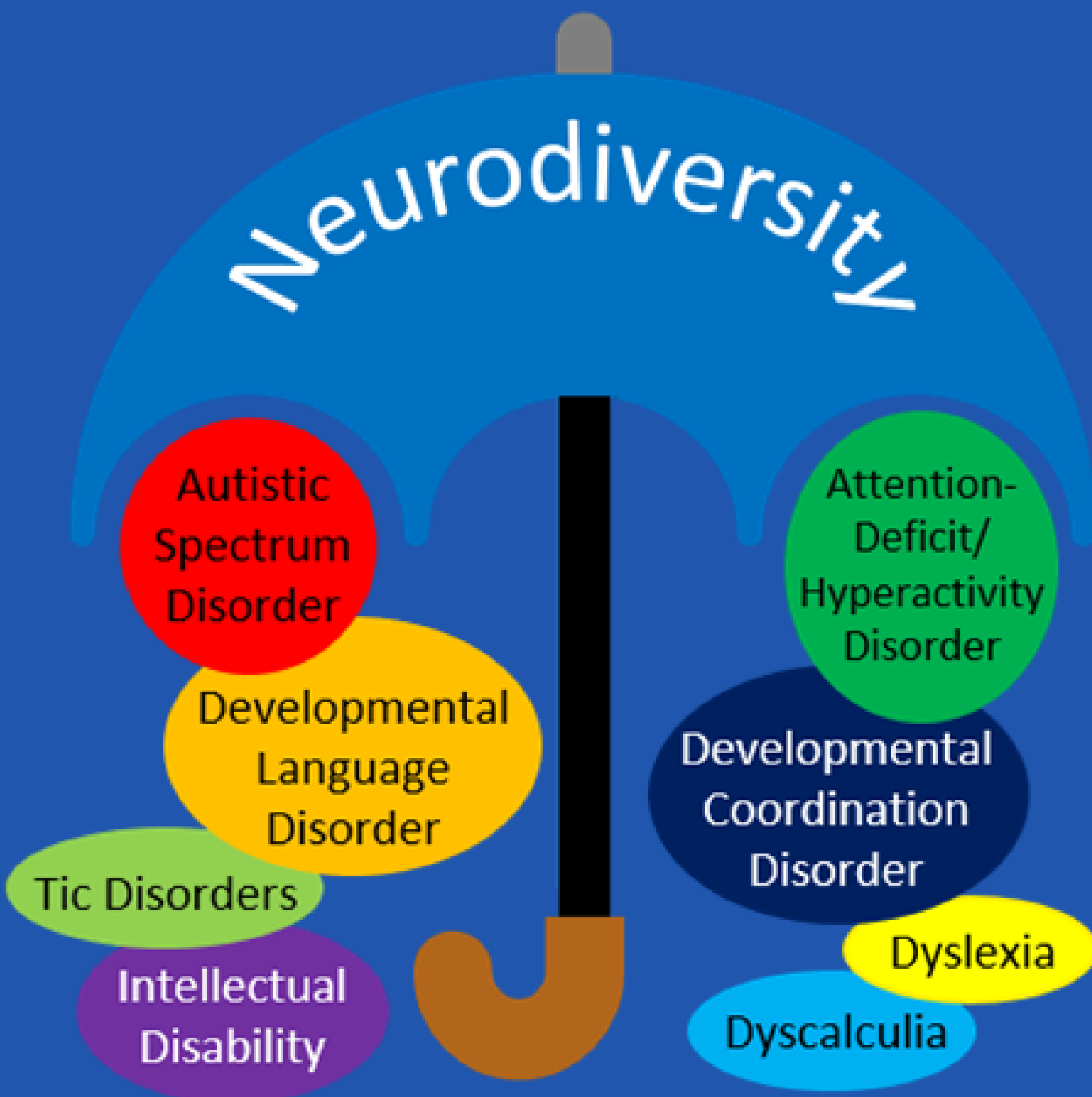
ASSEMBLIES THIS WEEK



## Neurodiversity Celebration Week



Mrs Bennett has run assemblies this week, celebrating Neurodiversity and the importance of an inclusive school. Our brains work in so many different ways and we love that!



EACH PERSON HAS A BRAIN THAT IS UNIQUE TO THEM; NO TWO BRAINS ARE QUITE THE SAME. NEURODIVERSITY IS THE CONCEPT THAT BRAIN DIFFERENCES ARE NATURAL VARIATIONS. SOME PEOPLE'S BRAINS SIMPLY WORK IN A DIFFERENT WAY.

TO FIND OUT MORE, VISIT [WWW.NEUDIVERSITYWEEK.COM](http://WWW.NEUDIVERSITYWEEK.COM)

# The WBSpotlight

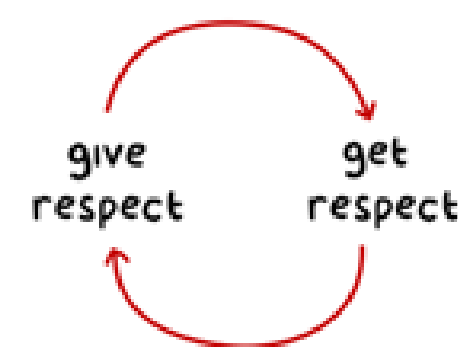
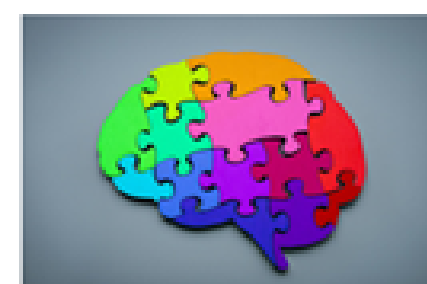
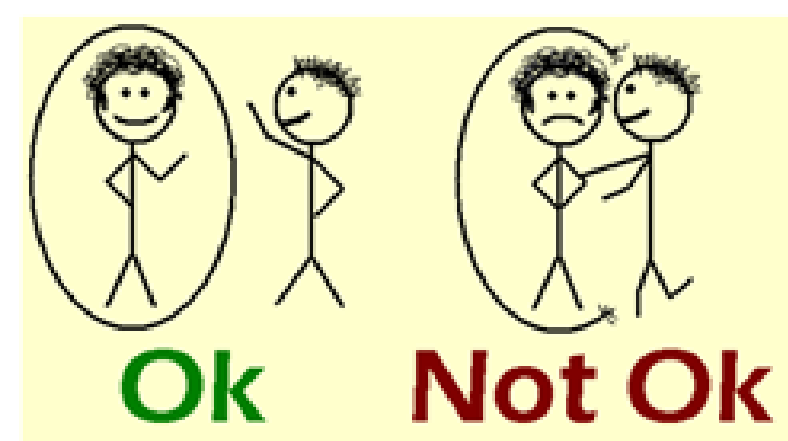


STUDENT BROADCAST  
KEY MESSAGES TO REINFORCE AT HOME

The student Broadcast this week has focused on appropriate and inappropriate touching. We took this opportunity to reinforce messages around 'play fighting' too and why it is best avoided in a school environment. We have had a number of injuries caused to students recently during what might be termed 'play fighting'. We recognise that play fighting is a natural part of growing up, exploring changing bodies and establishing hierarchies and boundaries, however this is not ok in school.

Staff and students have a right to come to school and:

- not receive unwelcome touch
- not be pushed aside
- be treated kindly
- be treated with respect
- Feel safe



Respect personal space.

MY PERSONAL AREA

Don't stand in it!!

Socially Skilled Kids

Personal space

# The WBSpotlight



BERLIN TRIP 2024

This week the Humanities Department have taken a group of culture-hungry students to visit Berlin. The journey home took longer than expected, but the days spent in Berlin itself more than made up for it. Huge thanks to the staff that accompanied the trip and to the superb young people they got to spend the week with. This memorable trip included visits to the Berlin Wall, Kidder transport memorial, The Palace of Tears and the Holocaust Memorial site. Our students conducted themselves with maturity at all times and represented WBS superbly.



# The WBSpotlight



## Staff CPD: Trauma Informed Teaching

On Monday 11th March, teaching staff attended an online CPD session on adopting a Trauma informed approach

Trauma-informed teaching starts with an understanding of how trauma can impact learning and behaviour. With this approach, teachers and support staff think about what student behavior may be telling them. And they reflect on their teaching practices to find ways to better support students who may be experiencing trauma.

Trauma Informed **Teaching**



kca.

# The WBSpotlight



## Year 11 Revision event

All Year 11 families were invited to a Revision event this week. Students are telling us that they need more strategies to boost their confidence in tackling revision. To address this, students and their families were invited to a carousel revision event where a number of different revision strategies were shared with students.

There are no excuses to start the revision now!!!

## The future of the VI Form

VI Form consultation held on site on Monday evening for WBS families and the wider community. The event was well attended and a useful discussion was had.

Mr Richards would like to thank everyone who gave up their time to share their views and support the school in moving forwards.



Sixth Form >



# The WBSpotlight



## Easter Egg Event!



ASK YOUR CHILD  
TO DROP OFF  
THEIR EASTER  
EGG DONATION TO  
RECEPTION OR  
WITH THEIR  
TUTOR.  
ENCOURAGE THEM  
TO CLAIM THEIR  
COUBERTIN  
POINTS.

There will be an Easter Egg Tombola  
Thursday 21<sup>st</sup> March in London break  
out space.

50 p a go or 3 goes for £1

All the money raised  
will go towards  
teaching & learning  
of the school.



# The WBSpotlight



## Duke of Edinburgh

### EXPEDITION TRAINING

BRONZE AND SILVER PARTICIPANTS SUCCESSFULLY COMPLETED THEIR EXPEDITION TRAINING LAST WEEK. IT WAS VERY MUDDY!



### AWARDS ACHIEVED

WELL DONE TO ALL THE PARTICIPANTS WHO HAVE BEEN WORKING HARD TO COMPLETE THEIR DOFE AWARDS. IF YOU HAVE PUT EVIDENCE ON EDOFE IT WILL BE REVIEWED BY MISS MCCOMBIE BEFORE YOUR AWARD CAN BE SENT FOR VERIFICATION. ONCE VERIFIED WE WILL THEN PRINT AND DISTRIBUTE CERTIFICATES. IF YOU HAVN'T HEARD ANYTHING ABOUT YOUR AWARD PLEASE CHECK YOUR EMAILS, AS IF WE FIND ANY ISSUES YOU WILL BE EMAILED TELLING YOU HOW TO RECTIFY THE PROBLEM.

### COMPLETING DOFE AWARDS

THE EXPEDITION SECTION IS ONLY ONE QUARTER OF A DOFE AWARD. IN ORDER TO COMPLETE THEIR AWARD, PARTICIPANTS MUST ALSO COMPLETE VOLUNTEERING, PHYSICAL ACTIVITY AND LEARNING A SKILL. EACH SECTION MUST HAVE A REPORT WRITTEN BY AN ASSESSOR AT THE END OF TIMESCALE, WHICH MUST THEN BE UPLOADED TO THE PARTICIPANTS EDOFE ACCOUNT. IF PARTICIPANTS ARE HAVING ANY PROBLEMS WITH COMPLETING THEIR AWARD, PLEASE CONTACT MISS MCCOMBIE.

IF A PARTICIPANT IS STRUGGLING TO FIND SUITABLE ACTIVITIES FOR THEIR PROGRAMME, MANY IDEAS CAN BE FOUND AT [WWW.DOFE.ORG/DOFEWITHADIFFERENCE/ACTIVITIES](http://WWW.DOFE.ORG/DOFEWITHADIFFERENCE/ACTIVITIES)

PLEASE REMEMBER THAT PROGRAM PLANS NEED TO BE ENTERED INTO EDOFE FOR APPROVAL BEFORE STARTING THE ACTIVITY. ONCE THE REQUIRED TIME HAS PASSED, ASSESSORS NEED TO WRITE AN ASSESSOR REPORT WHICH NEEDS TO BE UPLOADED AS EVIDENCE TO EDOFE. THIS CAN BE DONE AT [WWW.DOFE.ORG/ASSESSOR](http://WWW.DOFE.ORG/ASSESSOR)

### EDOFE APP

PARTICIPANTS CAN ACCESS THEIR EDOFE ACCOUNT VIA THE DOFE APP. PARTICIPANTS CAN NOW SET THEIR ACTIVITIES, RECORD EVIDENCE AND SUBMIT PROGRAMMES FOR APPROVAL AT ANY TIME, NO MATTER WHERE THEY ARE. THE DOFE APP IS CURRENTLY AVAILABLE FOR PARTICIPANTS TO DOWNLOAD ON ANDROID AND IOS. YOU CAN DOWNLOAD THE APP BY GOING TO THE GOOGLE PLAY STORE OR APPLE APP STORE AND SEARCHING 'THE DUKE OF EDINBURGH'S AWARD'.

### OPEN EXPEDITIONS

IF YOUR CHILD IS UNABLE TO ATTEND THE SCHOOL ORGANISED EXPEDITIONS, THEN THEY CAN JOIN AN OPEN EXPEDITION RUN BY AN APPROVED ACTIVITY PROVIDER (AAP). SCHOOL USES CHASE TRAINING SOLUTIONS AS THEIR AAP, AND THE DATES OF THEIR OPEN EXPEDITIONS CAN BE FOUND ON THEIR WEBSITE HERE

[HTTPS://CHASETRAININGSOLUTIONS.CO.UK/DOFE-EXPEDITIONS/](https://chasetrainingsolutions.co.uk/dofe-expeditions/)

OTHER OPPORTUNITIES CAN BE FOUND BY SEARCHING

[HTTPS://WWW.DOFE.ORG/OPPORTUNITY-FINDER/](https://www.dofe.org/opportunity-finder/)

# The WBSpotlight



## Extra curricular: Spring term

For more live information please subscribe & download the squad in touch app <https://apps.squadintouch.com/mc/10101>

	Outdoor Space MUGA, Grass, Astroturf		Sports Hall	Swimming Pool
Monday				Performance Swimming Club (Lane Swimming)
STAFF				Miss Bagnall
Tuesday	Y7-11 Netball	Y9-11 Football	Y7-11 Basketball	Improvers Swimming Club
STAFF	Mrs Jardine	Mr Boak	Mr Wilson	Miss Bagnall & Ms Coleing
Wednesday	Y7&8 Boys Rugby		Badminton *Y7&8 3.20 - 4.10pm *Y9-11 4.10 - 5pm	
STAFF	Miss Johnson		Mr Bourton & Mrs Hennessy	
Thursday	Y7-11 Girls Football	Y9-11 Rugby	Running Club (After February Half Term)	
STAFF	Mr Boak	Miss Johnson	Mr Ridge/Mr Thurzs	
Friday	Y7&8 Football	Y7-11 Hockey	Wenlock Lightning Netball Club *Y7-9 5.00 - 6pm *Y10-13 6.00 - 7pm	
STAFF	Mr Boak/Mr Parkes	Mr Wilson	Mrs Jardine	



## Dance Clubs



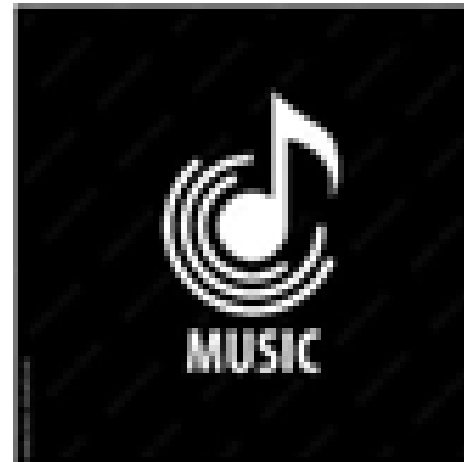
Day of the Week	Year Group	Where	Time
Monday	Year 9-11 Dance Club	Studio 2	3:20-4:20
Wednesday	Year 7-8 Dance Club	Studio 3	3:20-4:20
Wednesday	Elite Dance: Y7-13 (Audition Only)	Studio 2	3:20-4:20
Thursday	Year 11 GCSE Dance Rehearsal/Revision	Studio 2	3:20-4:20

# MUSIC News




## Music News

### Music Lessons Available



Lessons are available on the full-range of orchestral and popular instruments through our suppliers Shropshire Music Service and Music Heroes. Please contact Ms Adams for further information about these. Lessons are available on the following instruments:

Piano	Flute	Trumpet	Violin
Keyboard	Oboe	Trombone	Viola
Guitar	Clarinet	French Horn	Cello
Bass Guitar	Saxophone	Euphonium	Double Bass
Drum-Kit	Bassoon	Tuba	Orchestral Percussion



### Music Extra-Curricular Opportunities:

- Monday – Friday lunchtime: Music room and practice rooms available for individual practice. Students are to see Ms Adams for a music pass.
- Wednesday 3.30 – 4.20pm: Rock Band Rehearsals
- Thursday 3.30 – 4.20pm: Choir Rehearsals



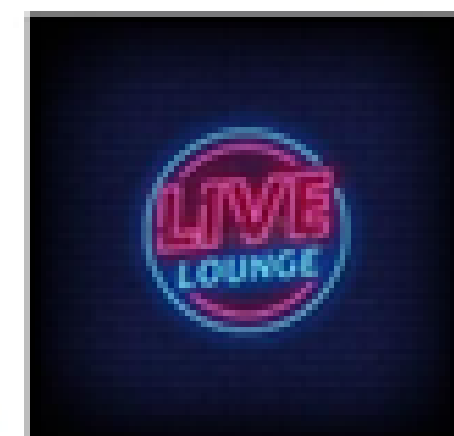
Our school choir are currently welcoming new members, and are learning new songs for upcoming performances. They will be participating in a number of performances in the local community in the Summer Term, including our local primary schools. The Choir will also be participating in 'Shropshire Sings' on Wednesday 12<sup>th</sup> June 2024. They will join with other students from their age-range from a variety of Shropshire Schools to present a combined performance of popular songs.

### Music Performances:

We are pleased to be able to offer an increased provision of performance opportunities for our young musicians to participate in as detailed below:

**Tuesday 19<sup>th</sup> March 2024 at 6.00pm**

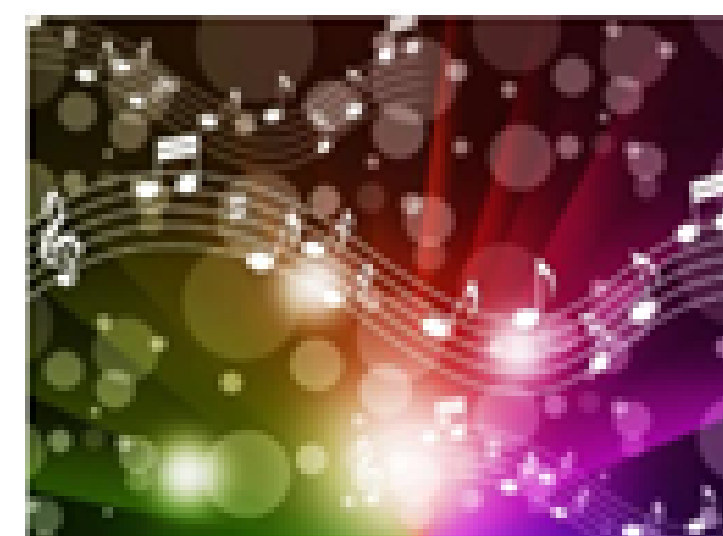
'The Live Lounge' soloists and small ensemble performances. Students who are interested in performing should see Ms Adams. The audience will be by invitation of the performers taking part. The event will take place in school in the Coubertin Lecture Theatre.



**Wednesday 12<sup>th</sup> June 2024 (evening performance at 6.00pm).**

The School Choir will take part in the annual music festival 'Shropshire Sings' at The West Midlands Show Ground.

The choir have been learning a number of songs in preparation for this event and are looking forward to performing them in June. Choir members will be receiving information about ticket availability for this event in the coming days.



# Notices



TOP SOIL / COMPOST REQUEST. MR JONES IS BUILDING A PUMPKIN PATCH BY THE SCHOOL GREENHOUSE AND IS IN NEED OF ANY SPARE TOP SOIL OR UNWANTED COMPOST. IF YOU HAVE ANY THAT YOU WOULD BE WILLING TO DONATE COULD YOU PLEASE CONTACT HIM? EMAIL ADDRESS: [MARK.JONES@WBS.318EDUCATION.CO.UK](mailto:MARK.JONES@WBS.318EDUCATION.CO.UK)



## FUTURE PROOF YOUR CAREER WITH AN APPRENTICESHIP

Visit our world class state-of-the-art Training Facilities and gain an insight into the benefits of an engineering apprenticeship!




**ALDRIDGE**

Tuesday 26<sup>th</sup> Mar  
10.00am – 2.00pm

**TELFORD**

Thursday 28<sup>th</sup> Mar  
10.00am – 2.00pm

- Take a tour of the training academy
- Talk to our recruitment team
- Discuss our fantastic vacancies
- Apply via our easy step application form
- Talk to tutors and apprentices
- Talk to companies about their current vacancies



Hello from the **Family Information Service** (FIS for short). Our job is to give you the info and resources you need to help your family life run a little smoother. We can help with:

- Childcare - finding it and advice on paying for it
- Local baby and toddler groups
- Events, activities, and fun things to do in the school holidays,
- Support for parents and families

We cover everything and anything to do with family life, so if you have a question, chances are we'll be able to help, or if we can't, we'll point you in the direction of someone who can.

Follow us on social media for all the latest news and info, or [sign up for our brand new newsletter.](#)

 @ShropshireFamilyInfo
  @ShropshireFamilyInfo
  @ShropFamilyInfo



There isn't enough space on this poster to list all of the ways in which modern day

## parenting is hard.

So instead,  
We want you to know what makes it easier...



BEING

seen, heard, validated  
& supported.



Join Our Online

# BOOK CLUB

Starting Tuesday 9<sup>th</sup> April '24  
**8PM-9.15PM**

Book: *The Book You Wish Your Parents Had*  
Read by Philippa Perry

Hosted By...


&


Dr Maria Orledo  
GP, Parent Coach,  
SE Trainer

Jodie Jones  
Teacher, Education  
Advisor,  
Parent Coach

£12.90 per session

"This book club has made a big difference! Little things each week are helping me to be less shouty and more connected with my children."

Visit [www.nurtureinfused.com](http://www.nurtureinfused.com) to find out more!

