

GCSE UNIT 1

STILL LIFE

SEPTEMBER - DECEMBER

ART & DESIGN



Still Life coursework Unit 1.

Theme: Going Out /Staying In.

AO1: Key words:

Tone
Colour
Shape
Pattern
Line
Texture
Form
Develop
Refine
Record
Select

AO1: Develop:

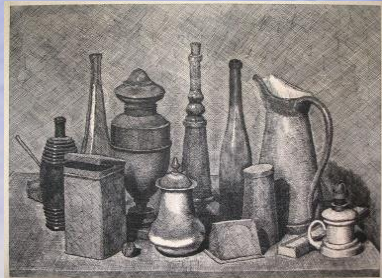
Research Artists:

Create a power point or word/publisher document. Copies of examples of artists Still Life work.

Information on/about the artist. Your opinions /thoughts about the work.

See next slide – writing frame.

- Giorgio Morandi
- Vincent Van Gogh
- Own Selected artist relating to your theme



AO1: Own Photos: You should have access to these – saved in your home folder. Select your best photos-reflecting your theme and in focus .Print a colour and black and white copy.

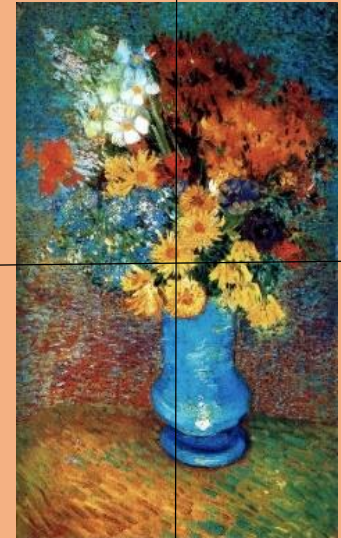
AO1: Develop: Research own artist reference(s).

Google / research your own artist(s). Create a power point or word /publisher documents. Copies of examples of artists Still Life work. Information on/about the artist. Your opinions /thoughts about the work. See next slide writing frame.



AO3: Record:

Copies from own photos. Detailed pencil studies and colour studies from own photos. Always work on good quality paper. Use the simple grid method if you do not have access to a light box.



Simple grid method:

Divide the artists still life work you want to copy into 4 equal parts. Recreate the still life work one section at a time

Analysis Writing Frame

1. Give some general background information about the artist.
2. What do you see, what is the style, what is the image? Describe it literally.
3. What does it make you think of, feel or realise?
4. What do you think the artist is trying to communicate?
5. How does the image communicate this message?
6. What emotions are represented?
7. What would you like to know about it?
8. What do you like and dislike about it? Why?
9. How do you think it may have been achieved?
- 10. What ideas can you take from it, what aspects would you like to use in your own work?**

Visual Language (the top 12 things to talk about)

Depth	Colour	Composition	Tone/contrast	Texture
Perspective	Light	Line	Movement	Space
	Pattern	Form		

Word Bank

Colour	Composition	Feeling	Style	Light
Blend	Background	Alive	Abstract	Artificial
Bright	Blurred	Atmospheric	Derivative	Dark
Clashing	Complex	Delicate	Distorted	Evening
Cold	Confused	Depressing	Emotional	Fierce
Deep	Distance	Dignified	Exaggerated	Gentle
Dull	Eye Line	Disturbing	Exterior	Harsh
Glowing	Focus	Fresh	Fake	Hazy
Harmonious	Foreground	Expressive	Fantasy	Intense
Intense	Form	Humorous	Figurative	Natural
Luminous	Middle ground	Imposing	Impressionistic	Shady
Mixed	Near	Nostalgic	Religion	Shadowy
Opaque	Perspective	Sad	Representational	Warm
Pale	Proportion	Sentimental	Sketch	
Pastel	Scale		Surreal	
Pure	Symmetry		Symbolic	
Secondary				

GCSE Art and Design Framework

COMPONENT ONE: /01

Portfolio

60% of total for GCSE
Maximum Mark - 120

COMPONENT TWO: /02

Externally set task

40% of total for GCSE
Maximum Mark - 80

Assessment Criteria

	Assessment Objective
AO1	Develop ideas through investigations, demonstrating critical understanding of sources.
AO2	Refine work by exploring ideas, selecting and experimenting with appropriate media, materials, techniques and processes
AO3	Record ideas, observations and insights relevant to intentions as work progresses
AO4	Present a personal and meaningful response that realises intentions and demonstrates understanding of visual language

Giorgio Morandi:



Giorgio Morandi:





Vincent Van Gogh 'Vase with Daisies and Anemones. Paris. Summer 1887 .Oil on canvas 61x38cm

