

Year7  
Art & Design

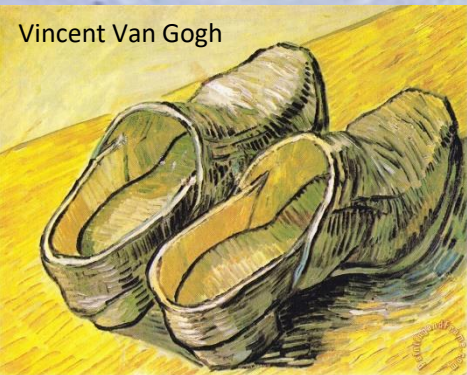


# YEAR 7 FORMAL ELEMENTS

**Tasks: Skills:** Shading, hatching/ crosshatching

1. Create a tone grid using pencil/pen. Make a pencil/pen copy of the tone ball
2. Make a pencil/pen copy of the crosshatch study

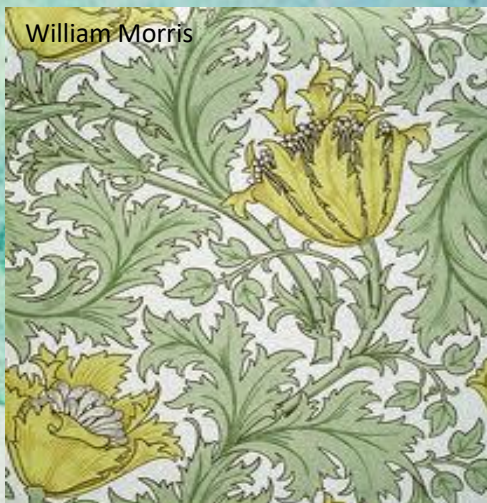
Vincent Van Gogh



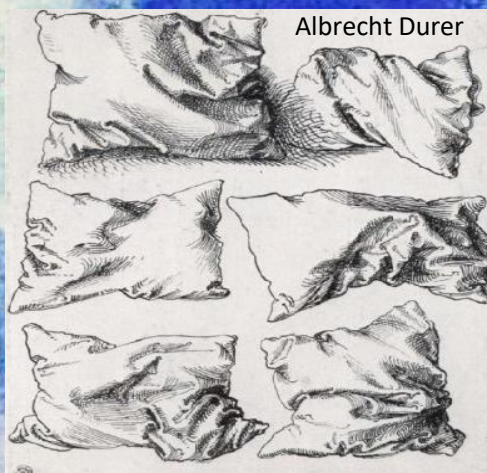
Henri Matisse



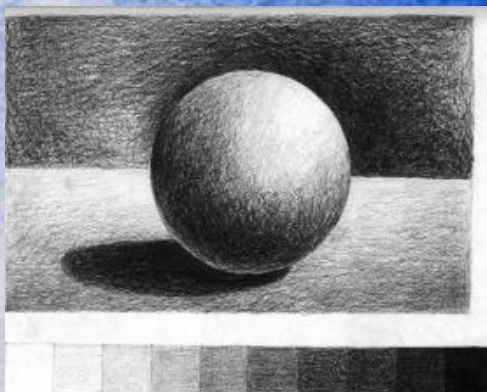
William Morris



Albrecht Durer



Giorgio Morandi



**Tasks: Knowledge and understanding. Research on artists**

- Giorgio Morandi
- Albrecht Durer
- Vincent van Gogh
- Henri Matisse
- William Morris

**Produce a double page spread in your sketchbook or an A4 word/publisher document**

- Pictures
- Facts
- Dates
- Size/scale
- Materials /media used
- Link with key words
- Question /opinions
- The most important bit of the art work?

**Tasks: Skills: Copies of artists references.**

Use pencil, pen, colouring crayons, water colours, oil pastels to make a copy of the artist reference.

**Task: Knowledge and understanding.**

Learn the basic colour theory rules.

Primary, Secondary, Tertiary.

INSIDE THE LINE

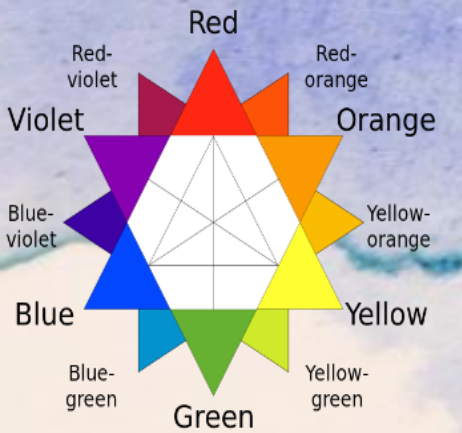
Primary, Secondary, Tertiary.

FORM The 3 Dimension of an object

Texture The way surface will feel

## KEY WORDS

TONE	The lightness or darkness of something
COLOUR	Primary, Secondary, Tertiary and Complementary Colours
LINE	Line can define a shape, pattern, movement, tone or texture.
FORM	A 3D shape or the way that something is shaded to look realistic.
PATTERN	A design that is created by repeating lines, shapes, tones of colour.
SHAPE	A shape enclosed by a line. Geometric or irregular.
TEXTURE	How something 'actually' or 'visually' feels.



# Task: Learn the facts about basic Colour theory:

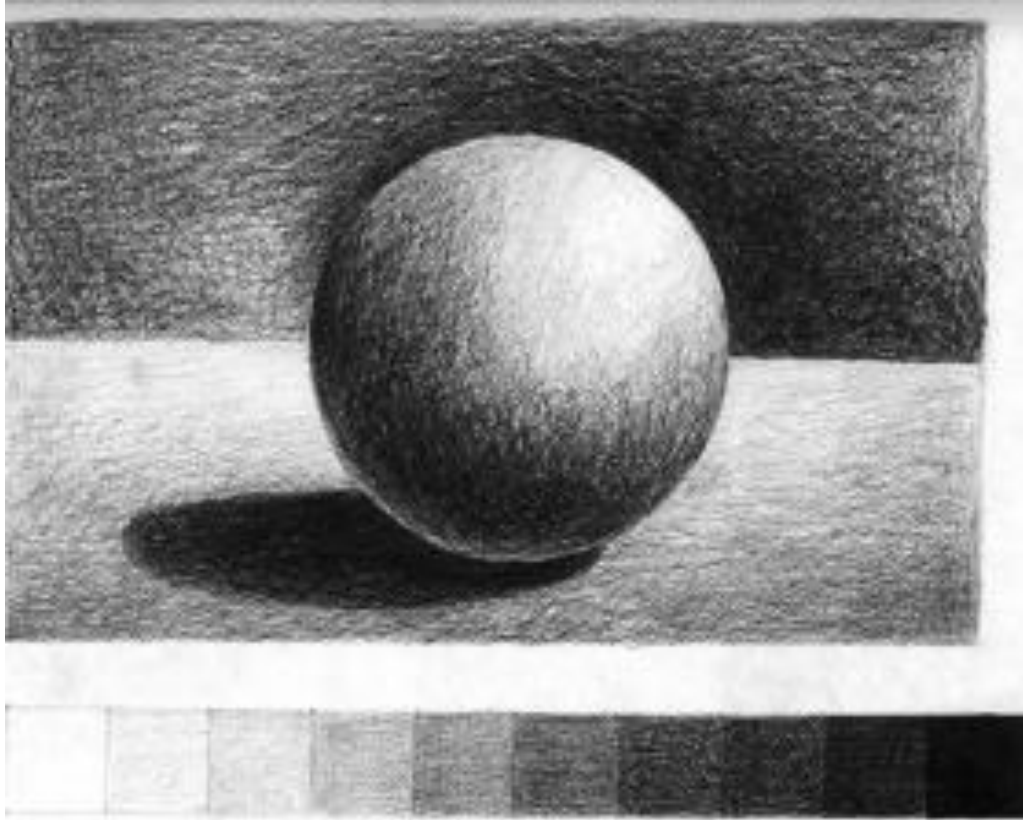
Primary colours are red, blue, yellow.

Secondary colours are purple, orange, green. Secondary colour mixing:

- Red and blue = purple
- Red and yellow= orange
- Blue and yellow = green
  
- Tertiary colours are when you mix one primary with a secondary or two secondary colours.
  
- To get a BROWN mix all the primary colours together.
- Black and white are non colours.
- Complementary(opposite each other on the colour wheel)The colour pairings are:
  - Red and green
  - Purple and yellow
  - Blue and orange
  
- Warm colours are reds through to yellows browns and tans. Warm colour come forward.
- Cool colours are from blue green through blue violet and most greys. Cool colours go backwards(recede).



Tone: Shading . Blended tone / crosshatch. Copying task.



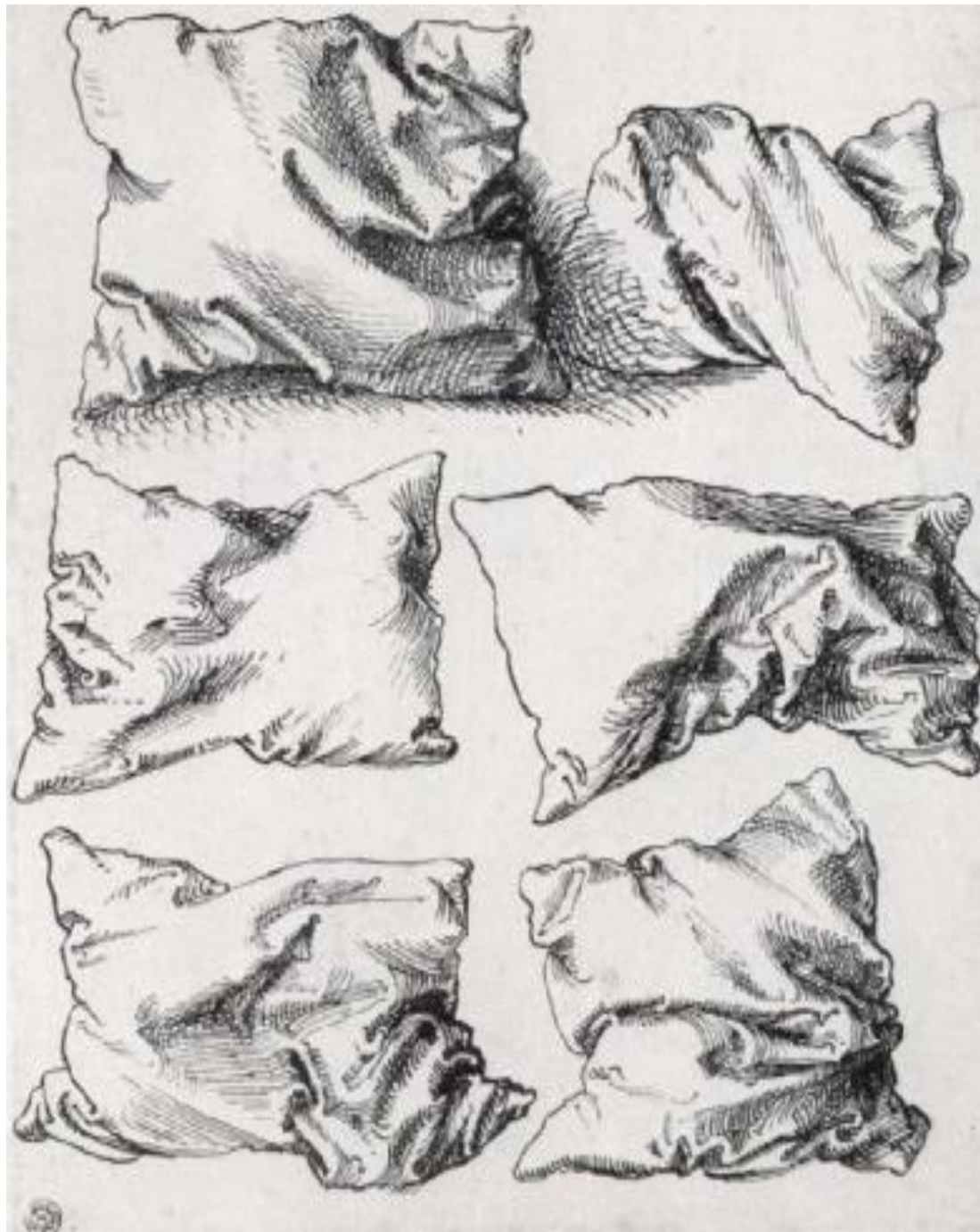


Copying task: Vincent van Gogh 'Vase with Daisies and Anemones'. Paris. Summer 1887 .Oil on canvas 61x38cm





Line : Albrecht Durer : Copying task . Pen /pencil.



Pattern: William Morris : Copy and colour task.



Shape : Henri Matisse :copy and collage task.

